



Rhophilin Polyclonal Antibody

Catalog No	YP-Ab-14976
Isotype	IgG
Reactivity	Human;Rat;Mouse;
Applications	WB;ELISA;IHC
Gene Name	RHPN1
Protein Name	Rhophilin-1
Immunogen	The antiserum was produced against synthesized peptide derived from human RHPN1. AA range:474-523
Specificity	Rhophilin Polyclonal Antibody detects endogenous levels of Rhophilin protein.
Formulation	Liquid in PBS containing 50% glycerol, 0.5% BSA and 0.02% sodium azide.
Source	Polyclonal, Rabbit,IgG
Purification	The antibody was affinity-purified from rabbit antiserum by affinity-chromatography using epitope-specific immunogen.
Dilution	WB 1:500-2000;IHC-p 1:50-300; ELISA 2000-20000
Concentration	1 mg/ml
Purity	≥90%
Storage Stability	-20°C/1 year
Synonyms	RHPN1; KIAA1929; Rhophilin-1; GTP-Rho-binding protein 1
Observed Band	100kD
Cell Pathway	cytosol,
Tissue Specificity	Blood,Brain,
Function	domain:The PDZ domain mediates interaction with ROPN1.,function:Has no enzymatic activity. May serve as a target for Rho, and interact with some cytoskeletal component upon Rho binding or relay a Rho signal to other molecules.,similarity:Belongs to the RHPN family.,similarity:Contains 1 BRO1 domain.,similarity:Contains 1 PDZ (DHR) domain.,similarity:Contains 1 REM (Hr1) repeat.,subunit:Binds specifically to GTP-Rho. Interacts with ROPN1.,
Background	domain:The PDZ domain mediates interaction with ROPN1.,function:Has no enzymatic activity. May serve as a target for Rho, and interact with some cytoskeletal component upon Rho binding or relay a Rho signal to other molecules.,similarity:Belongs to the RHPN family.,similarity:Contains 1 BRO1 domain.,similarity:Contains 1 PDZ (DHR) domain.,similarity:Contains 1 REM (Hr1) repeat.,subunit:Binds specifically to GTP-Rho. Interacts with ROPN1.,



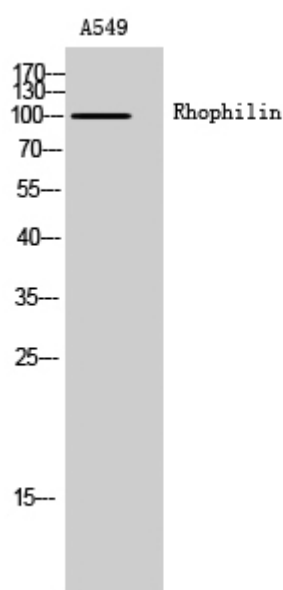
matters needing attention

Avoid repeated freezing and thawing!

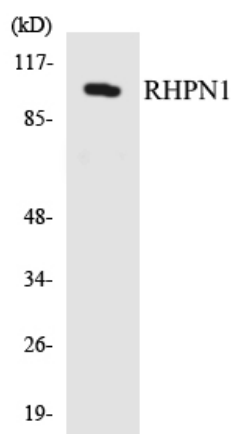
Usage suggestions

This product can be used in immunological reaction related experiments. For more information, please consult technical personnel.

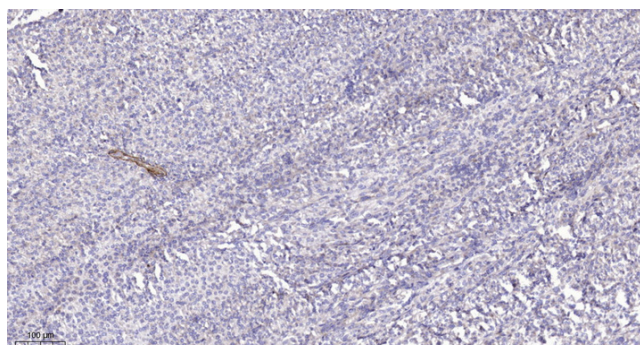
Products Images



Western Blot analysis of A549 cells using Rhophilin Polyclonal Antibody



Western blot analysis of the lysates from HepG2 cells using RHPN1 antibody.



Immunohistochemical analysis of paraffin-embedded human Colon cancer. 1, Antibody was diluted at 1:200(4° overnight). 2, Tris-EDTA,pH9.0 was used for antigen retrieval. 3,Secondary antibody was diluted at 1:200(room temperature, 45min).